

DAWEI

DW-X1

DW Air

Wireless Diagnostic Ultrasound Device



3-in-1 Probe



For love, image the world



DW-X1

Wireless Diagnostic Ultrasound Device

Pocket probe design



Extended battery
runtime



2 hours of uninterrupted
use

Lightweight design



Weighing only 120g

Effortless single-handed
operation

Compatibility &
Adaptability



iOS/Android system
Mobile phone/Tablet

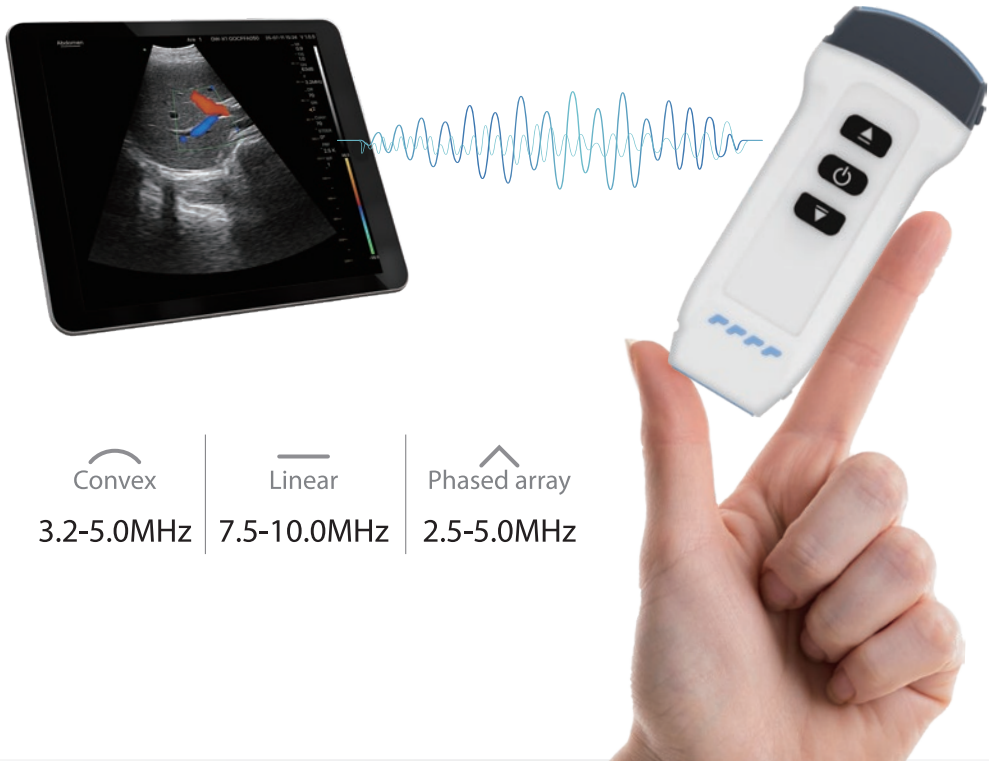
Strong Wi-Fi signal



No signal loss with in a
10-meter range

Freedom & flexibility

DW Air ultrasound sets a new standard in handheld ultrasound with the 3-in-1 probe (Convex + Linear + Phased Array), offering crystal-clear images anytime, anywhere. Ultra-portable, cordless, customizable, and intuitive, it's always with you—lightweight and ready for every patient.



Convex

3.2-5.0MHz

Linear

7.5-10.0MHz

Phased array

2.5-5.0MHz

3-in-1 Probe



Convex probe



Linear probe



Phased array probe

Software with wide practicability

Friendly user interface design concept.



Presets

- Abdomen
- OB/GYN
- Cardiac
- Urology
- Breast
- Kidney**
- Lung
- MSK
- Thyroid
- Small organs
- Pediatrics
- Neural
- Carotid
- Vascular Access

Features:

- ✓ Unlimited users
- ✓ Free software, no hidden fees
- ✓ Support for DICOM units
- ✓ Supports Russian, Indonesian, French, Simplified Chinese, English Portuguese, Spanish, Vietnamese
- ✓ Support printing reports
- ✓ Regional zoom and panoramic zoom in Freeze mode
- ✓ With gain adjustment GN function
- ✓ Customizable addition and editing of patient information
- ✓ Supports USB data connection

Measure
Obstetric measurement package

- GA(GS)
- GA(FL)
- GA(HC)
- GA(AC)
- EFW(BPD)
- EFW(FL)
- CLEAR

Buttons:

- B
- B/M
- Color flow
- DPDI
- PW

Real-time imaging performance

Post-processing features

Adjustable measurement positions with real-time data update

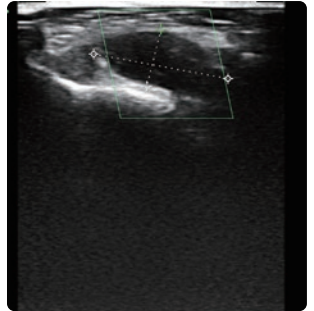
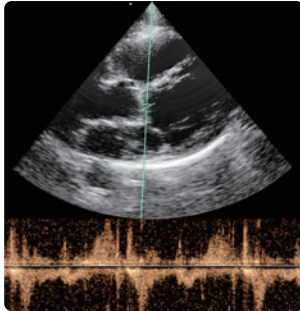
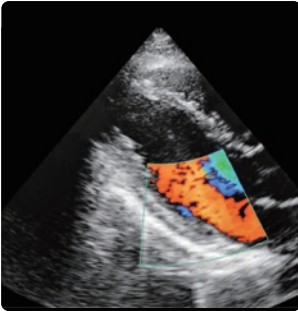
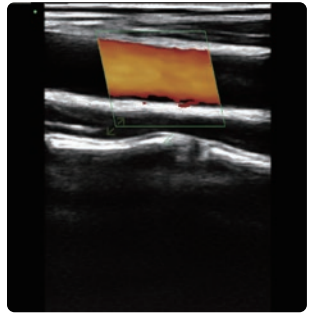
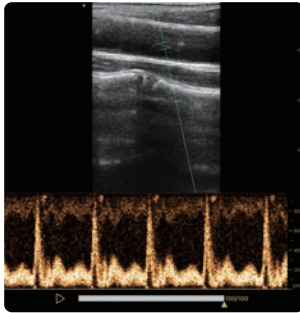
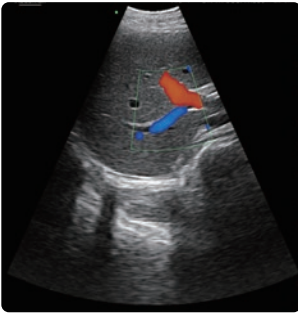
Zoom in/out
available after
freezing





DW-X1

Clinical images



Specs hardware

System platform

Android system, Apple iOS system

Dimensions

123mm × 52.6mm × 22mm

Battery

1350mAh lithium Ion battery

Duration: ≥2 hours

Weight

Approx. 120g

Frequency

3.2-5.0MHz (Convex)

7.5-10.0MHz (Linear)

2.5-5.0MHz (Phased array)

Network transmission

WIFI networking

USB data connection

DICOM Unit

Imaging

Modes

B, B/M, CFM, PDI, PW

Depth

90mm-305mm (Convex)

20mm-100mm (Linear)

Memory

Image and real-time cine storage

Image/cine playback

(up to 1000-frame cine loop review)

Measurement package

General: length, area/perimeter, trajectory, depth, angle

Obstetrical: CRL, BPD, GS, FL, HC, AC, FW(BPD), FW (FL)

B/M: heart rate , duration, distance, LVID measurement

PW: speed, S/D, heart rate , depth

